

FOR LEASE: 443 10TH STREET • TOLEDO, OHIO

THE ANDRUS BUILDING

14,250 SF OFFICE BUILDING • PRIVATE 33-CAR PARKING LOT



THE PROPERTY

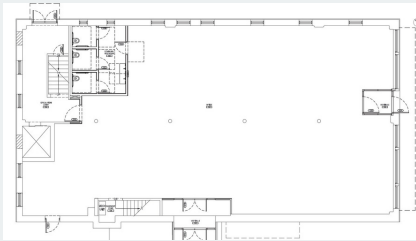
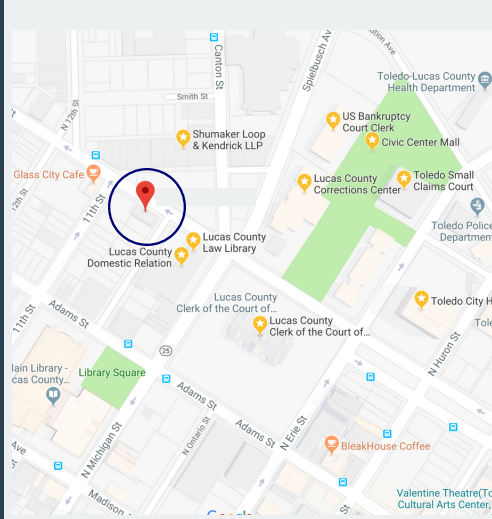
Built in 1892, this locally designated historic landmark was home to hard working men and women who built parts for the original Jeep.

KEY FACTS

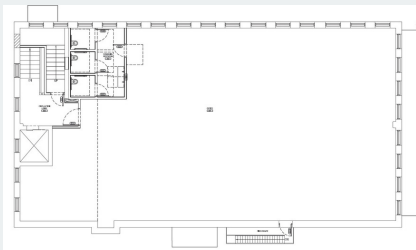
- Opens in 2020
- 3 Floors + Basement
- 4,800 SF/Floor
- Build to Suit
- \$22/SF Gross

SAFE AND CONVENIENT PARKING

UNMATCHED LOCATION NEAR COURTS, LAW LIBRARY AND CENTRAL BUSINESS DISTRICT



First Floor



Second/Third Floors

SUBURBAN-LIKE AMENITIES IN THE HEART OF DOWNTOWN TOLEDO

Join the many great
companies downtown
including ProMedica,
Shumaker, Loop & Kendrick,
Owens Corning, and SSOE.

RESERVE YOUR PLACE IN HISTORY

MATTHEW RUBIN, CRANE DEVELOPMENT
(567) 200 3247 mrubin@cranedevlopment.com
VisitHistoricAndrus.com to learn more

